



1 FRONT ELEVATION
1/4" = 1'-0"

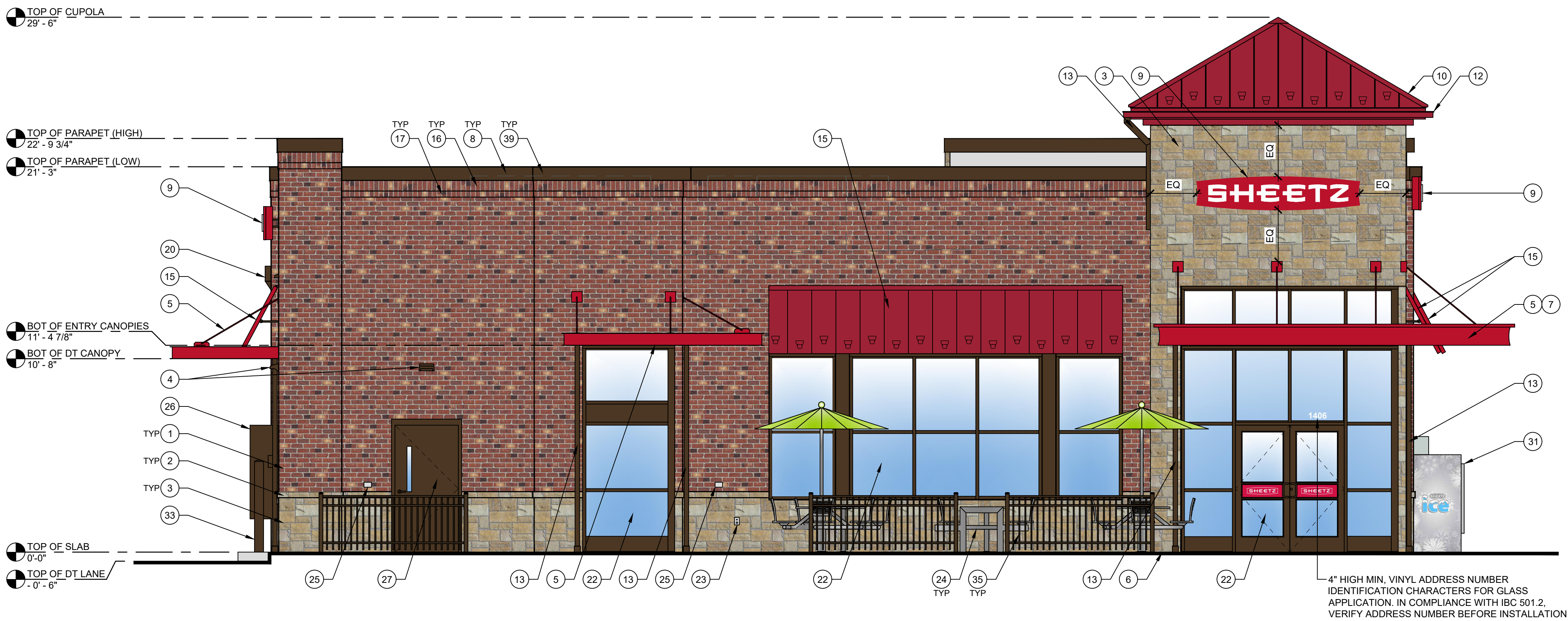
TYPICAL EXTERIOR ELEVATION NOTES:

- ALL LIGHTS SHOWN ABOVE AND/OR BELOW DOORS OR WINDOWS ARE TO BE CENTERED ON THE DOOR OR WINDOW UNLESS NOTED OTHERWISE.
- FIXTURES/EQUIPMENT BETWEEN TWO DOORS OR WINDOWS ARE TO BE CENTERED EQUALLY.
- EXTERIOR SEALANT FOR STONE SHALL COMPLY WITH SECTION 07 9005 JOINT SEALANTS. GENERAL BUILDING FASCIA/WEATHER SEALANT AND SHALL MATCH THE COLOR OF THE STORE.

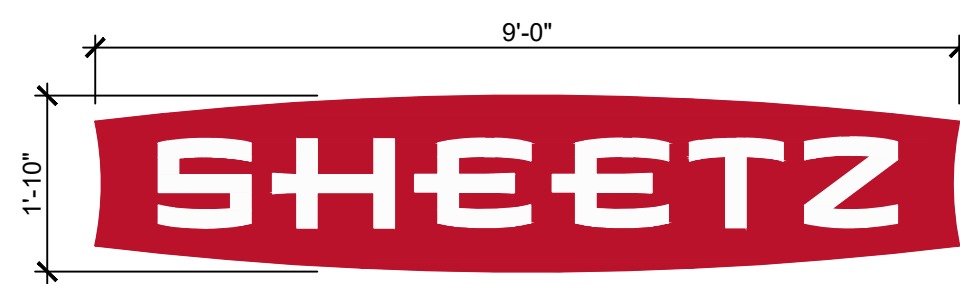
EXTERIOR ELEVATION KEYNOTES:

- BRICK VENEER, COLOR: 680 BY CONTINENTAL BRICK COMPANY. SEE MASONRY SPEC
- CAST STONE SILL, COLOR: CRAB ORCHARD. SEE MASONRY SPEC
- ANCHORED CAST STONE MASONRY VENEER, COLOR: CRAB ORCHARD. SEE MASONRY SPEC
- EXTERIOR LIGHT FIXTURE, REFER TO ELECTRICAL DRAWINGS
- ARCHITECTURAL CANOPY, COLOR: REGAL RED, PREMIUM TWO-COAT KYNAR FINISH
- BRICK PAVER WALKWAY
- LIGHTED CURVED FASCIA CANOPY ATTACHMENT
- METAL COPING, COLOR: DARK BRONZE
- WALL MOUNTED BUILDING SIGN, SEE SHEET A200.
- STANDING SEAM METAL ROOF, COLOR: BRITE RED
- NOT USED
- GUTTER, COLOR TO MATCH CUPOLA COLOR
- DOWNSPOUT, COLOR: DARK BRONZE
- DRIVE-THRU WINDOW (IF APPLICABLE)
- METAL STANDING SEAM SHED STYLE AWNING AND FRAME ASSEMBLY, ROOF COLOR: BRITE RED, FRAME COLOR: DARK BRONZE
- BRICK SOLDIER COURSE, COLOR: 680 BY CONTINENTAL BRICK COMPANY. SEE MASONRY SPEC
- BRICK ROWLOCK COURSE, COLOR: 680 BY CONTINENTAL BRICK COMPANY. SEE MASONRY SPEC
- CONTROL JOINT, SEE MASONRY SPEC
- STEEL ROOF LADDER AND CRANKY POST, COLOR: DARK BRONZE
- STANDARD THROUGH WALL SCUPPER WITH CONDUCTOR HEAD & DOWNSPOUT, COLOR: DARK BRONZE
- OVERFLOW SCUPPER
- ALUMINUM STOREFRONT SYSTEM, SEE A600
- EXTERIOR HOSE BIB, REFER TO PLUMBING DRAWINGS
- OUTDOOR FURNITURE
- ELECTRICAL RECEPTACLE, REFER TO ELECTRICAL DRAWINGS
- ELECTRICAL EQUIPMENT, REFER TO ELECTRICAL DRAWINGS
- HM DOOR AND FRAME, COLOR: DARK BRONZE
- EMERGENCY WATER CONNECTION, REFER TO PLUMBING DRAWINGS
- SEAMLESS ALUM PANEL SYSTEM WITH EXPOSED FASTENERS, COLOR: DARK BRONZE
- PROPANE LOCKER
- ICE MERCHANDISER
- RTI FILLPORT
- STEEL BOLLARD, COLOR: DARK BRONZE
- CO2 FILLPORT
- DECORATIVE ALUMINUM FENCE, COLOR DARK BRONZE
- AUTOMATIC DOOR PUSH PLATE AND BOLLARD, BOLLARD COLOR: DARK BRONZE
- GAS METER AND RISER, REFER TO CIVIL UTILITY PLAN, COLOR: DARK BRONZE
- NOT USED
- LIGHT CHANNEL AT PARAPET COPING, SEE ARCHITECTURAL AND ELECTRICAL DRAWINGS FOR MORE INFORMATION.
- NOT USED
- FAUX WINDOWS WITH INTERNAL GRAPHIC

GLAZING CALCULATION FRONT ELEVATION = 2199.82 SQ FT		
DESCRIPTION	40% OF COVERAGE REQ	PROVIDED
TRANSPARENT GLAZING	879.92 SQ FT	590.61 SQ FT
FAUX WINDOW GLAZING	879.92 SQ FT	120.61 SQ FT
TOTAL GLAZING	879.92 SQ FT	711.22 SQ FT



2 LEFT ELEVATION
1/4" = 1'-0"



OUTLINE AREA = 14.84 SQ.FT.
BOX AREA = 16.52 SQ.FT.
TYPICAL OF FOUR
PROJECTS 7" OFF FACE OF BUILDING

A WALL MOUNTED "SHEETZ" BUILDING SIGN
1/2" = 1'-0"

Convenience Architecture
and Design P.C.
351 Sheetz Way, Claysburg, PA 16625
phone (814) 239-6013
email tcolumbu@sheetz.com
web site www.sheetz.com

PROJECT NAME:
NEW SHEETZ STORE
STORE #416R

ZEBULON
ARENDALL AVE.

Int. of North Arendall Avenue
and Pearces Road
Zebulon, NC 27597-8734

OWNER:
SHEETZ, INC.

5700 SIXTH AVE.
ALTOONA, PA 16602

CONSULTANT

PROFESSIONAL

KEYPLAN

ISSUE: 08.14.2025
SITE ID NO: 416R
AUTHOR BY: RJK / AMM
REVIEW BY: TMC / RJH
VERSION: 6139_v1.8

EXTERIOR
ELEVATIONS

A200

PRELIMINARY ELEVATIONS

PROJECT NAME:
**NEW SHEETZ STORE
STORE #416R**

**ZEBULON
ARENDALL AVE.**

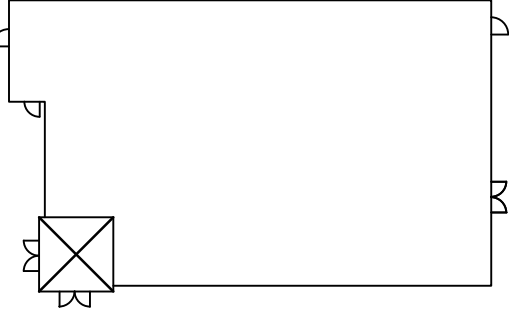
Int. of North Arendall Avenue
and Pearses Road
Zebulon, NC 27597-8734

OWNER:
SHEETZ, INC.

5700 SIXTH AVE.
ALTOONA, PA 16602

CONSULTANT

PROFESSIONAL



KEYPLAN

ISSUE: **08.14.2025**
SITE ID NO: **416R**
AUTHOR BY: **RJK / AMM**
REVIEW BY: **TMC / RJH**
VERSION: **6139_v1.8**

EXTERIOR
ELEVATIONS

A201

PRELIMINARY ELEVATIONS



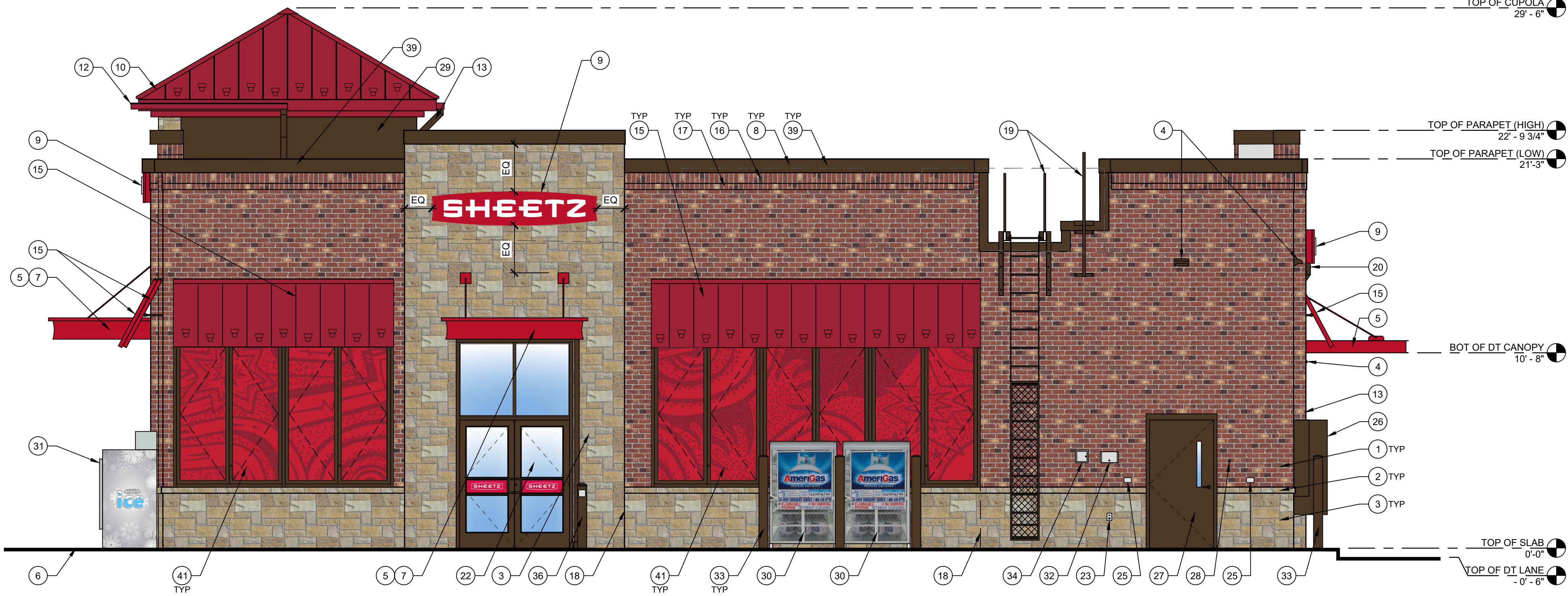
3 REAR ELEVATION
1/4" = 1'-0"

TYPICAL EXTERIOR ELEVATION NOTES:

- ALL LIGHTS SHOWN ABOVE AND/OR BELOW DOORS OR WINDOWS ARE TO BE CENTERED ON THE DOOR OR WINDOW UNLESS NOTED OTHERWISE.
- FIXTURES/EQUIPMENT BETWEEN TWO DOORS OR WINDOWS ARE TO BE CENTERED EQUALLY.
- EXTERIOR SEALANT FOR STONE SHALL COMPLY WITH SECTION 07 9005 JOINT SEALANTS, GENERAL BUILDING FASCIADE WEATHER SEALANT AND SHALL MATCH THE COLOR OF THE STONE.

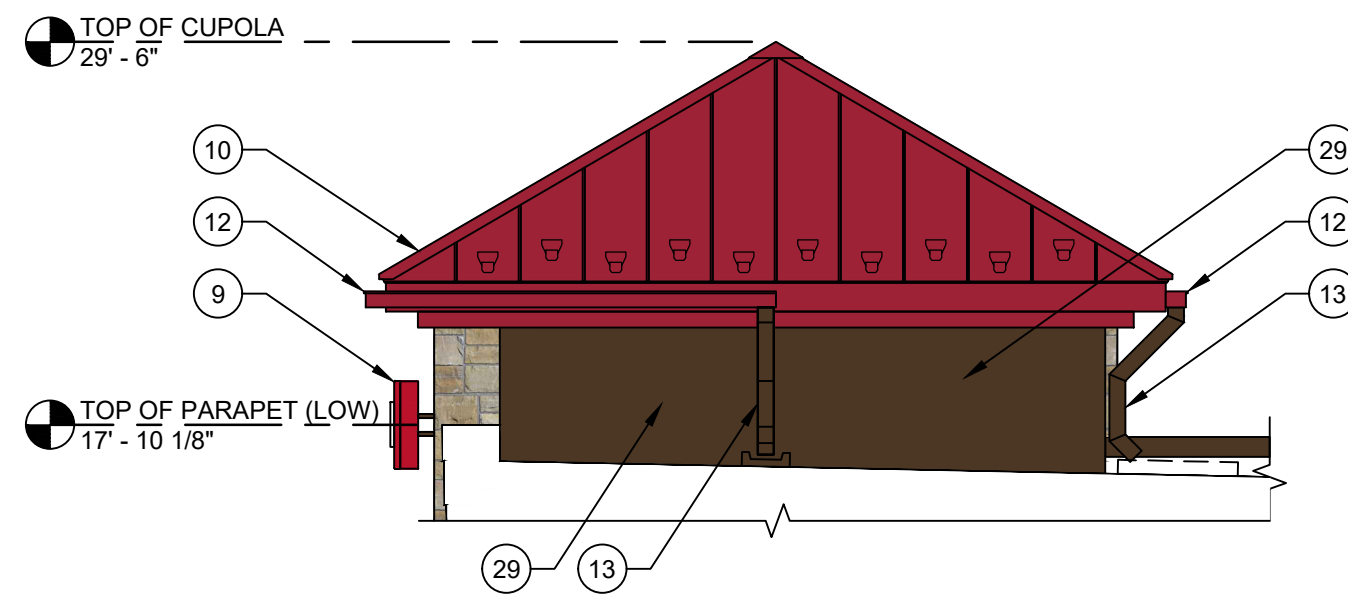
EXTERIOR ELEVATION KEYNOTES:

- BRICK VENEER, COLOR: 680 BY CONTINENTAL BRICK COMPANY. SEE MASONRY SPEC
- CAST STONE SILL, COLOR: CRAB ORCHARD. SEE MASONRY SPEC
- ANCHORED CAST STONE MASONRY VENEER, COLOR: CRAB ORCHARD. SEE MASONRY SPEC
- EXTERIOR LIGHT FIXTURE, REFER TO ELECTRICAL DRAWINGS
- ARCHITECTURAL CANOPY, COLOR: REGAL RED, PREMIUM TWO-COAT KYNAR FINISH
- BRICK PAVER WALKWAY
- LIGHTED CURVED FASCIA CANOPY ATTACHMENT
- METAL COPING, COLOR: DARK BRONZE
- WALL MOUNTED BUILDING SIGN, SEE SHEET A200.
- STANDING SEAM METAL ROOF, COLOR: BRITE RED
- NOT USED
- GUTTER, COLOR TO MATCH CUPOLA COLOR
- DOWNSPOUT, COLOR: DARK BRONZE
- DRIVE-THRU WINDOW (IF APPLICABLE)
- METAL STANDING SEAM SHED STYLE AWNING AND FRAME ASSEMBLY, ROOF COLOR: BRITE RED, FRAME COLOR: DARK BRONZE
- BRICK SOLDIER COURSE, COLOR: 680 BY CONTINENTAL BRICK COMPANY. SEE MASONRY SPEC
- BRICK ROWLOCK COURSE, COLOR: 680 BY CONTINENTAL BRICK COMPANY. SEE MASONRY SPEC
- CONTROL JOINT, SEE MASONRY SPEC
- STEEL ROOF LADDER AND CRANKY POST, COLOR: DARK BRONZE
- STANDARD THROUGH WALL SCUPPER WITH CONDUCTOR HEAD & DOWNSPOUT, COLOR: DARK BRONZE
- OVERFLOW SCUPPER
- ALUMINUM STOREFRONT SYSTEM, SEE A600
- EXTERIOR HOSE BIB, REFER TO PLUMBING DRAWINGS
- OUTDOOR FURNITURE
- ELECTRICAL RECEPTACLE, REFER TO ELECTRICAL DRAWINGS
- ELECTRICAL EQUIPMENT, REFER TO ELECTRICAL DRAWINGS
- HM DOOR AND FRAME, COLOR: DARK BRONZE
- EMERGENCY WATER CONNECTION, REFER TO PLUMBING DRAWINGS
- SEAMLESS ALUM PANEL SYSTEM WITH EXPOSED FASTENERS, COLOR: DARK BRONZE
- PROPANE LOCKER
- ICE MERCHANDISER
- RTI FILLPORT
- STEEL BOLLARD, COLOR: DARK BRONZE
- CO2 FILLPORT
- DECORATIVE ALUMINUM FENCE, COLOR DARK BRONZE
- AUTOMATIC DOOR PUSH PLATE AND BOLLARD, BOLLARD COLOR: DARK BRONZE
- GAS METER AND RISER, REFER TO CIVIL UTILITY PLAN, COLOR: DARK BRONZE
- NOT USED
- LIGHT CHANNEL AT PARAPET COPING, SEE ARCHITECTURAL AND ELECTRICAL DRAWINGS FOR MORE INFORMATION.
- NOT USED
- FAUX WINDOWS WITH INTERNAL GRAPHIC

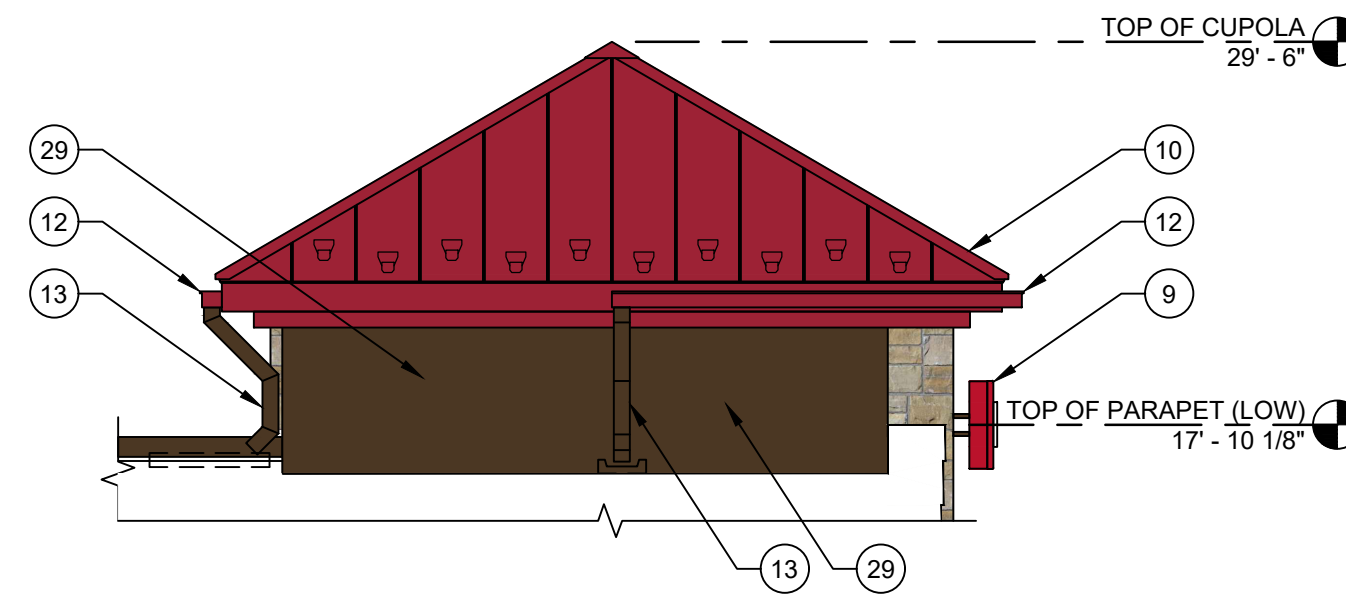


4 RIGHT ELEVATION
1/4" = 1'-0"

GLAZING CALCULATION RIGHT ELEVATION = 1,257 SQ FT		
DESCRIPTION	30% OF COVERAGE REQ	PROVIDED
TRANSPARENT GLAZING	377.10	73.34
FAUX WINDOW GLAZING	377.10	239.96
TOTAL GLAZING	377.10	313.3



5 CUPOLA ELEVATION FROM ROOF
1/4" = 1'-0"



6 CUPOLA ELEVATION FROM ROOF
1/4" = 1'-0"