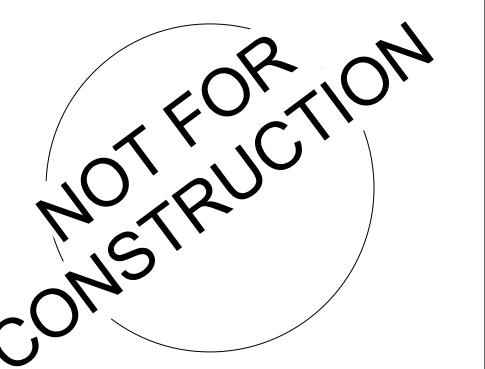


1 SHELL PLAN
R0.00 1/4" = 1'-0"



REVISIONS		
NO.	DATE	DESCRIPTION

Drawing Size: 30 x 42	Project #: 22121
Drawn By: JMA	Checked By: ADF

Title:
SHELL PLAN

Sheet Number:
R0.00

NOT FOR CONSTRUCTION

04/28/2023
Architect Name - RYAN M. FAUST
Architect Number - 14521

THE SEAL & SIGNATURE APPLY ONLY TO THE DOCUMENT TO WHICH THEY ARE APPLIED & WE EXPRESSLY DISCLAIM ANY RESPONSIBILITY FOR ALL OTHER PLANS, SPECIFICATIONS, ESTIMATES, REPORTS OR OTHER DOCUMENTS OR INSTRUMENTS RELATING TO OR INTENDED TO BE USED FOR ANY PART OR PARTS OF THE PROJECT.

REVISIONS

NO.	DATE	DESCRIPTION

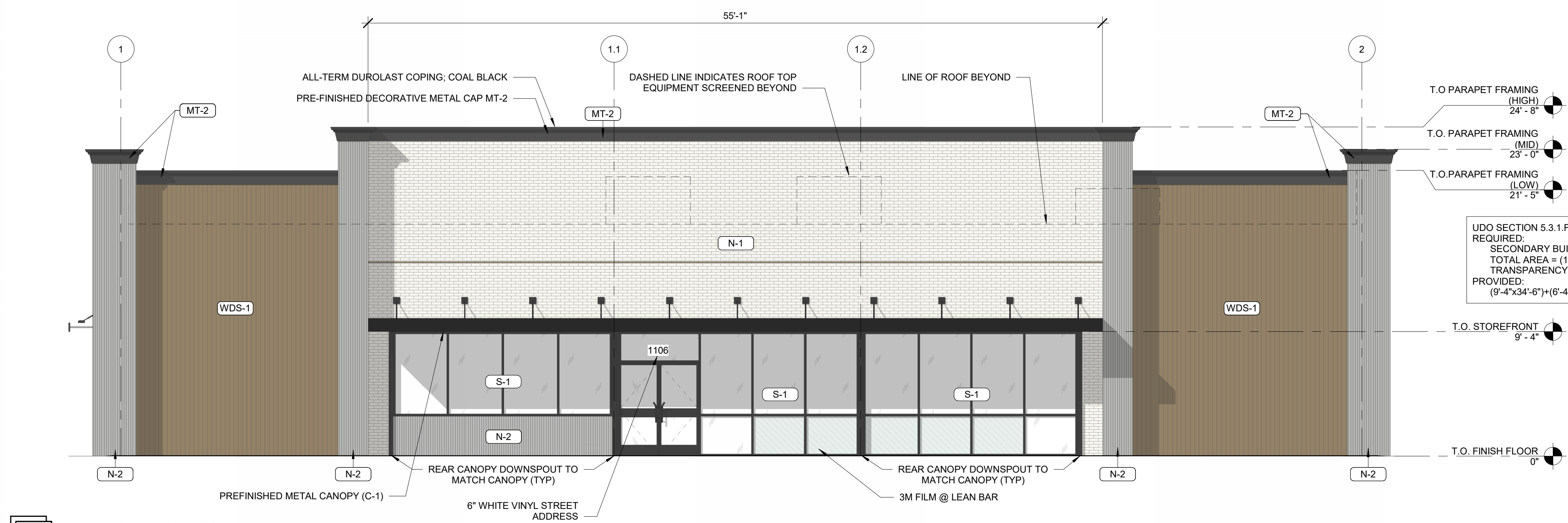
Drawing Size: 30 x 42
Project #: 22121
Drawn By: JMA
Checked By: ADF
Title:

REVIEW BOARD ELEVATIONS

Sheet Number:
R1.00

Date: 04/28/2023 Store #: 1055397

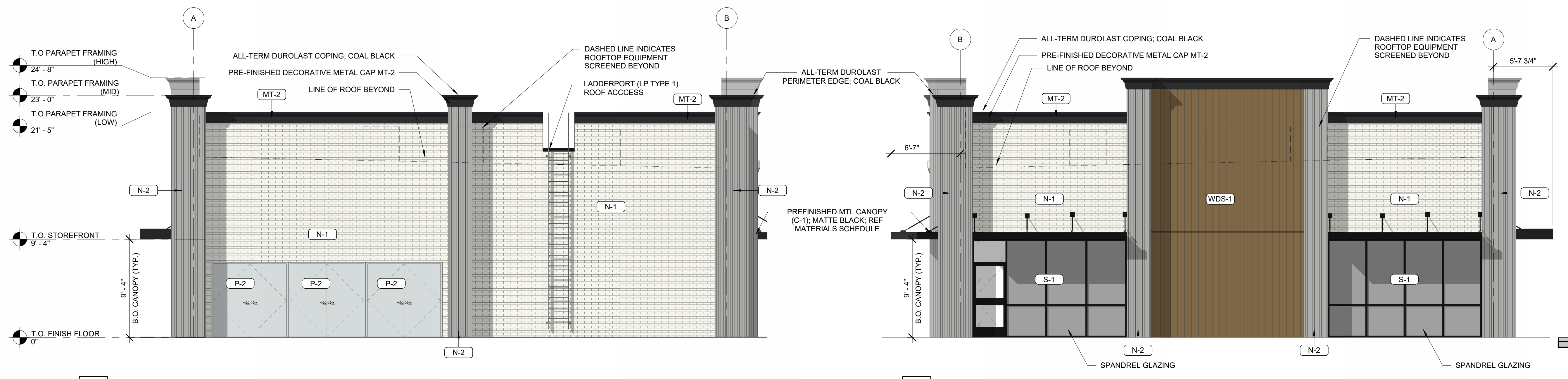
EXTERIOR MATERIALS SCHEDULE			
(NOT ALL MATERIALS IN SCHEDULE ARE USED)			
NO.	MATERIAL	MANUFACTURER	COLOR
MR-1	MEMBRANE ROOFING	DUROLAST	WHITE
N-1	FIBER CEMENT PANEL	NICHIHA	VINTAGE BRICK, PAINTED SHERWIN WILLIAMS SW7005 "PURE WHITE"
N-2	FIBER CEMENT PANEL	NICHIHA	RIBBED, COLOR TO MATCH SHERWIN WILLIAMS SW7659 "GRIS"
CP-1	EDGE METAL PARAPET CAP	DUROLAST - ALL TERM EDGE	COAL BLACK
P-2	EXTERIOR HM DOORS, FRAMES, TRASH ENCLOSURE GATE, GRAVEL GUARDS, AND LIGHT POLES	SHERWIN WILLIAMS	SHERWIN WILLIAMS SW6232 "MISTY"
MT-2	PREFINISHED METAL PARAPET DETAIL	SHERWIN WILLIAMS	COLOR TO MATCH SHERWIN WILLIAMS SW6232 "TRICORN BLACK"
P-6	EXTERIOR BOLLARDS	SHERWIN WILLIAMS	SHERWIN WILLIAMS SW6258 "TRICORN BLACK"
S-1	ALUMINUM STOREFRONT GLAZING	KAWNEER	451T VG - #29 BLACK FINISH
C-1	PREFINISHED ALUMINUM CANOPY	MAPES LUMISHADE CANOPY	MATTE BLACK BAKED ENAMEL W/ REAR GUTTER CONNECTIONS
WDS-1	WOOD LOOK SIDING	NICHIHA	VINTAGE WOOD - CEDAR - VERTICAL



4
R1.00
ELEVATION - FACING SOUTH
3/16" = 1'-0"

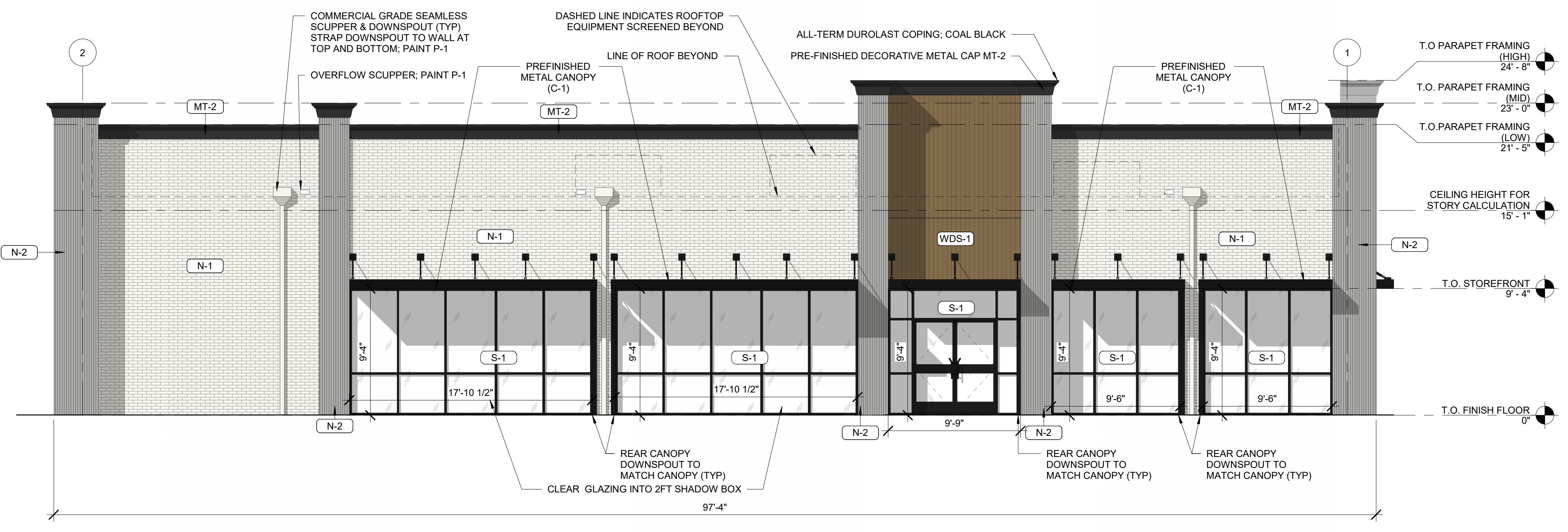
UDO SECTION 5.3.1.F.7: COMMERCIAL BUILDING FENESTRATION REQUIRED:
SECONDARY BUILDING WALL
TOTAL AREA = (15'-1" X 97'-4") = 1,492 SQFT
TRANSPARENCY SQFT = (1,492SQFT X 30%) = 448SQFT
PROVIDED:
(9'-4"x34'-6")+(9'-4"x16'-5") = 427SQFT

UDO SECTION 5.3.1.F.7: COMMERCIAL BUILDING FENESTRATION REQUIRED:
SECONDARY BUILDING WALL
TOTAL AREA = (10'-1" X 54'-11") = 829 SQFT
TRANSPARENCY SQFT = (829SQFT X 30%) = 249SQFT
PROVIDED:
(9'-4"x14'-8")+(9'-4"x14'-8") = 274SQFT



2
R1.00
ELEVATION - FACING EAST
3/16" = 1'-0"

3
R1.00
ELEVATION - FACING WEST
3/16" = 1'-0"



1
R1.00
ELEVATION - FACING NORTH
3/16" = 1'-0"

UDO SECTION 5.3.1.F.7: COMMERCIAL BUILDING FENESTRATION REQUIRED:
PRIMARY BUILDING WALL
TOTAL AREA = (15'-1" X 97'-4") = 1,492 SQFT
TRANSPARENCY SQFT = (1,492SQFT X 40%) = 597SQFT
PROVIDED:
(9'-4"x9'-6")+(9'-4"x9'-6")+(9'-4"x9'-9")+(9'-4"x17'-10 1/2")+(9'-4"x17'-10 1/2") = 602SQFT