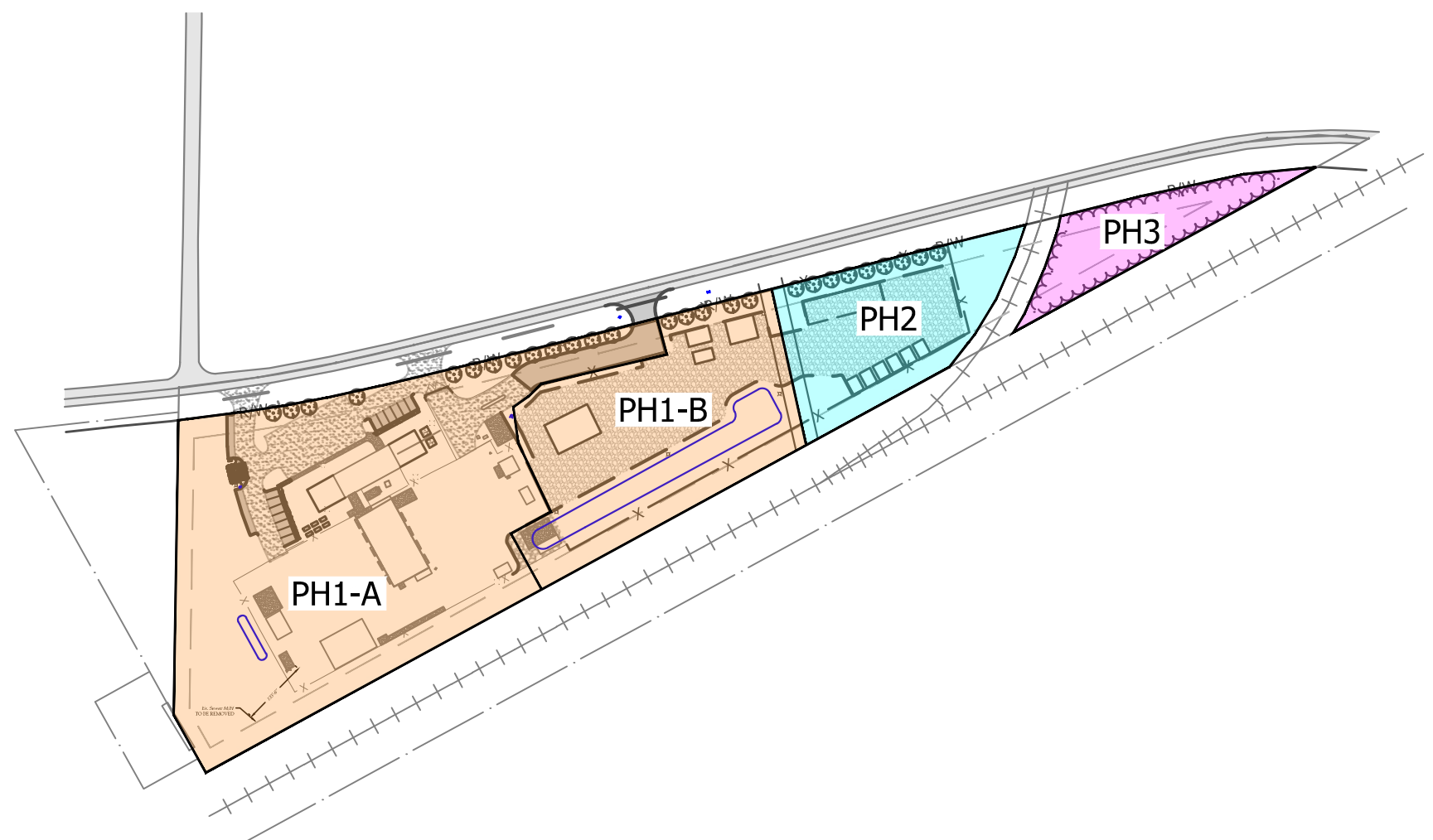
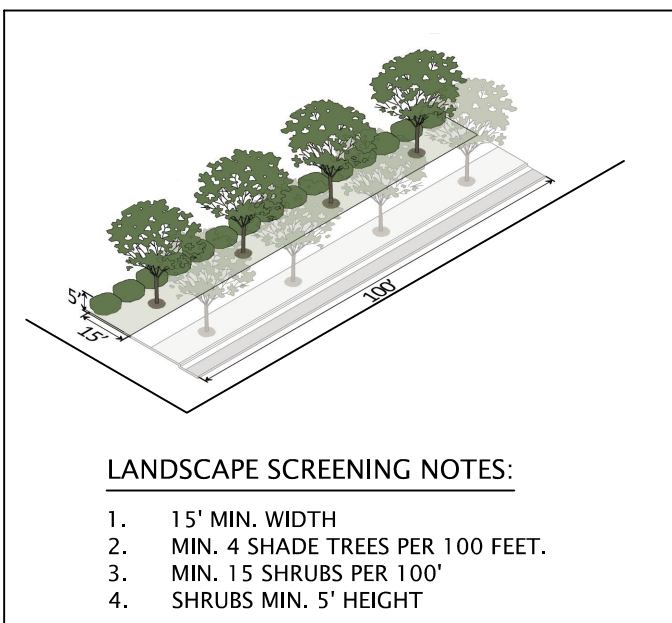


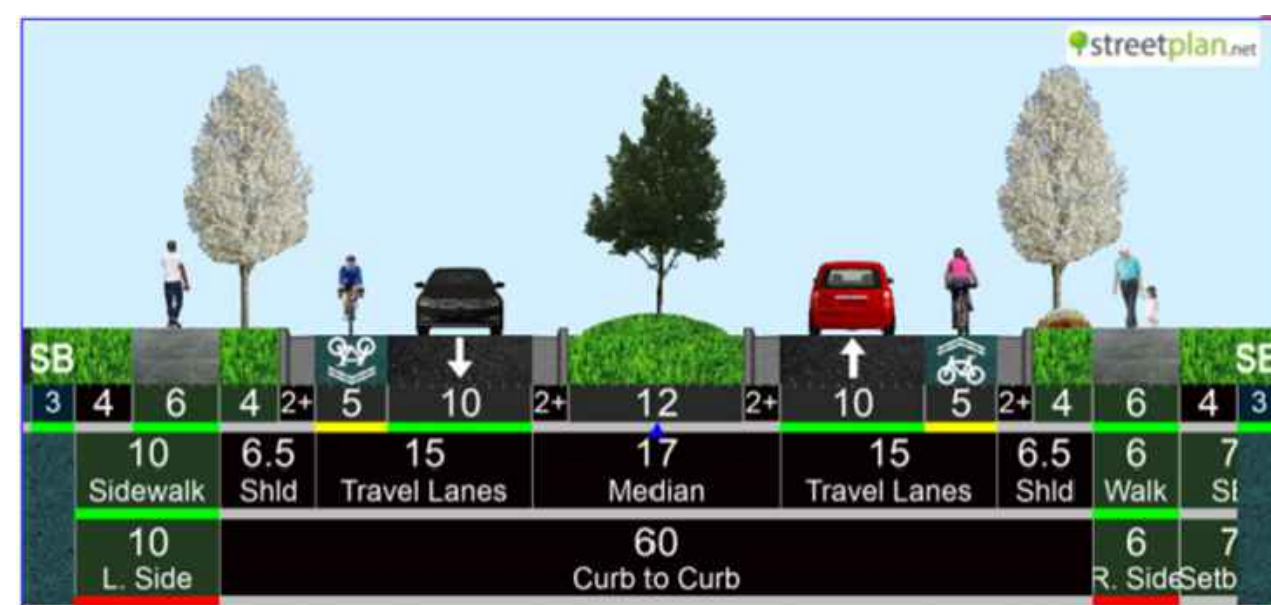
T:\Projects\Zebulon-29221-S-PublicWorksFacilityYardExpansion\CADD\C-1.dwg TRICHARDSON 11/17/2023 9:06 AM



**PROJECT PHASING**  
NOT TO SCALE

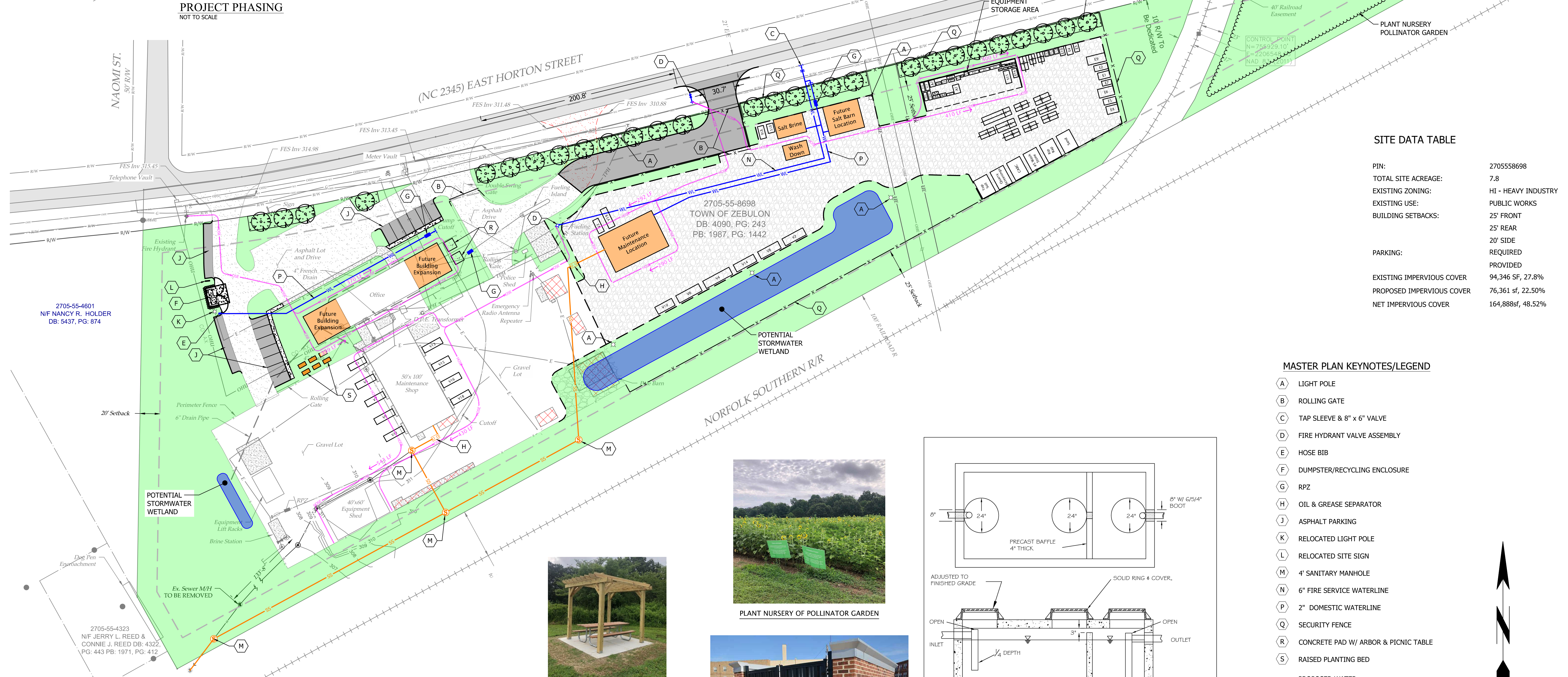


- LANDSCAPE SCREENING NOTES:**
1. 15' MIN. WIDTH
  2. MIN. 4 SHADE TREES PER 100 FEET.
  3. MIN. 15 SHRUBS PER 100'
  4. SHRUBS MIN. 5' HEIGHT



**RIGHT-OF-WAY IMPROVEMENTS**

NOT TO SCALE  
RIGHT-OF-WAY DEDICATION NOTE:  
ALL R.O.W. IMPROVEMENT TO BE CONSTRUCTED AS FUTURE IMPROVEMENTS. R.O.W. DEDICATIONS ONLY PROPOSED AS PART OF MASTER PLAN.



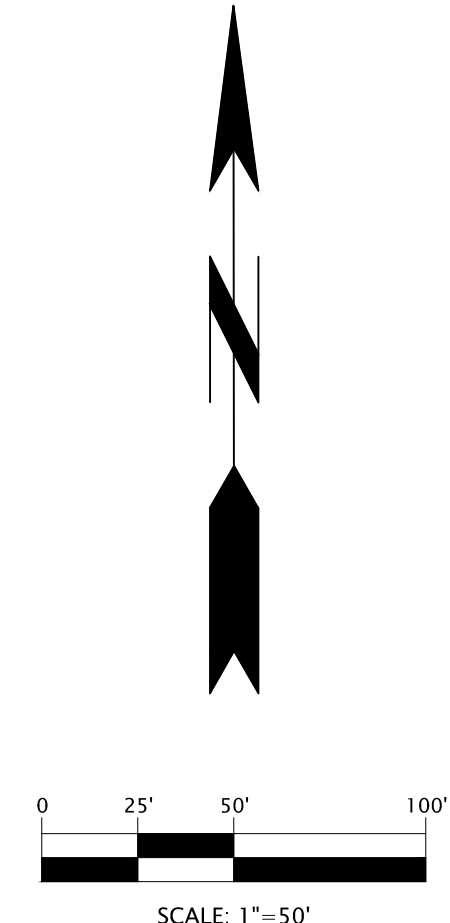
**SITE DATA TABLE**

PIN:	2705558698
TOTAL SITE ACREAGE:	7.8
EXISTING ZONING:	HI - HEAVY INDUSTRY
EXISTING USE:	PUBLIC WORKS
BUILDING SETBACKS:	25' FRONT 25' REAR 20' SIDE
PARKING:	REQUIRED PROVIDED
EXISTING IMPERVIOUS COVER:	94,346 SF, 27.8%
PROPOSED IMPERVIOUS COVER:	76,361 sf, 22.50%
NET IMPERVIOUS COVER:	164,888sf, 48.52%

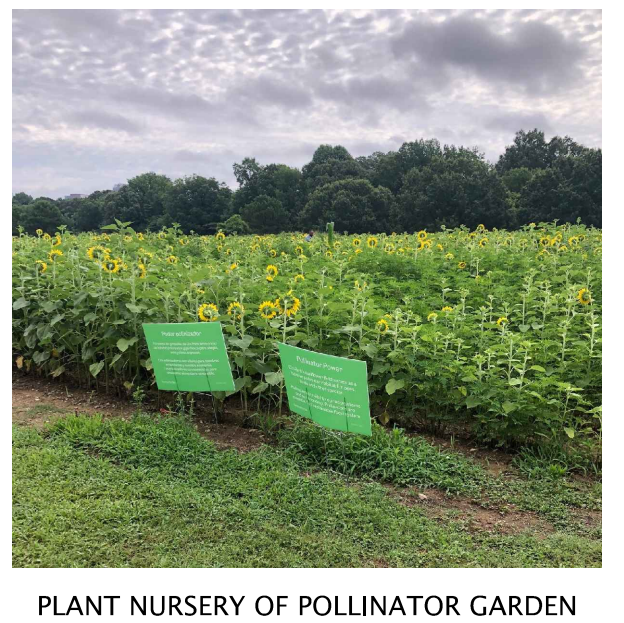
**MASTER PLAN KEYNOTES/LEGEND**

- (A) LIGHT POLE
- (B) ROLLING GATE
- (C) TAP SLEEVE & 8" x 6" VALVE
- (D) FIRE HYDRANT VALVE ASSEMBLY
- (E) HOSE BIB
- (F) DUMPSTER/RECYCLING ENCLOSURE
- (G) RPZ
- (H) OIL & GREASE SEPARATOR
- (J) ASPHALT PARKING
- (K) RELOCATED LIGHT POLE
- (L) RELOCATED SITE SIGN
- (M) 4' SANITARY MANHOLE
- (N) 6" FIRE SERVICE WATERLINE
- (P) 2" DOMESTIC WATERLINE
- (Q) SECURITY FENCE
- (R) CONCRETE PAD W/ ARBOR & PICNIC TABLE
- (S) RAISED PLANTING BED

- W — PROPOSED WATER
- S — PROPOSED 6" SEWER
- — PROPOSED OPEN SPACE
- — PROPOSED PAVEMENT
- — PROPOSED GRAVEL
- — NEW STRUCTURE
- — STRUCTURE TO BE REMOVED OR RELOCATED
- — ASPHALT DRIVE TO BE REMOVED
- — SANITARY SEWER TO BE REMOVED



**PRELIMINARY**  
DO NOT USE FOR CONSTRUCTION



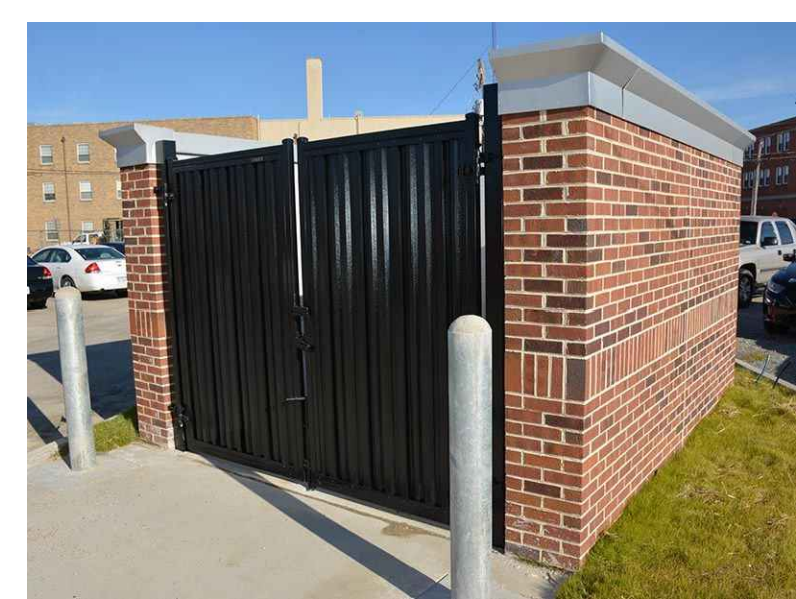
PLANT NURSERY OF POLLINATOR GARDEN



CONCRETE PAD WITH ARBOR & PICNIC TABLE

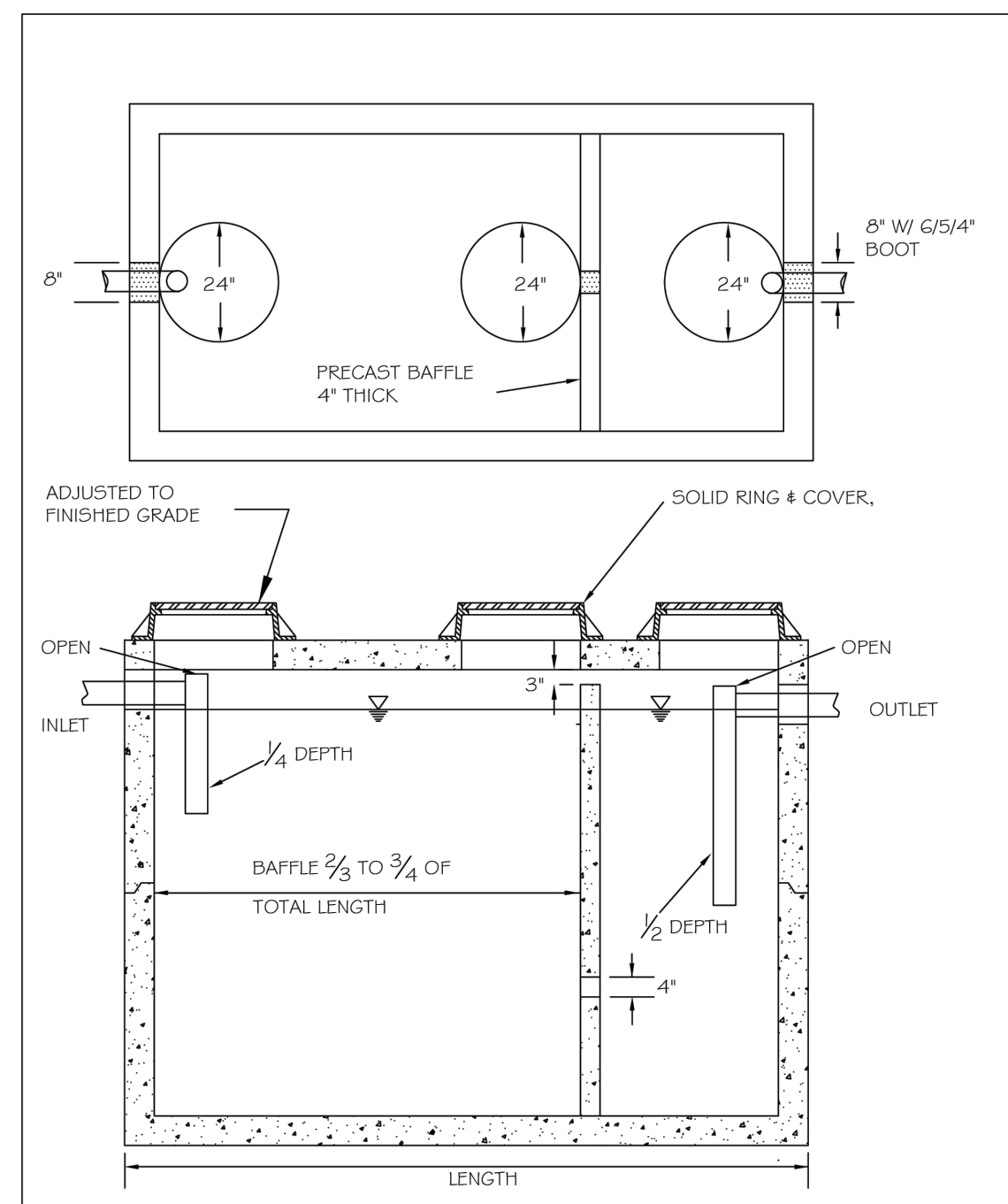


RAISED BEDS FOR GARDENING & STRESS RELIEF



**DUMPSTER PAD AND ENCLOSURE NOTES:**

1. ENCLOSURE MUST BE BUILT OF MASONRY MATERIALS AND FINISHED TO MATCH PRINCIPAL BUILDING.
2. GATE FINISHES MUST BLEND WITH PRINCIPLE BUILDING BY USING OPAQUE METAL, WOOD COMPOSIT, PVC MATERIAL OR APPROVED EQUAL.
3. ENCLOSURE MUST BE LANDSCAPED TO BLEND WITH SURROUNDING AREAS AND BUILDING AND VISUALLY SOFTEN THE APPEARANCE.



NOTES:  
1. REINFORCEMENT: 11-20 BRIDGE LOADING (TRAFFIC RATED)  
2. CONCRETE: 4000 PSI @28 DAYS  
3. EARTHCOVER: 0' TO 5' MAX.

DWG. NO.	REVISIONS	DATE	REVISIONS	DATE
S-40	RR1	3/30/02	D.H.L.	6/18/08
	ABB	3/19/04		

CITY OF RALEIGH  
DEPARTMENT OF PUBLIC UTILITIES  
1000 GALLON GREASE INTERCEPTOR

REVISIONS




TOWN OF ZEBULON  
ZEBULON PUBLIC WORKS EXPANSION  
MASTER PLAN

DESIGNED BY: AMW  
DRAWN BY: THR  
CHECKED BY: AMW  
PROJECT NO.: 2966  
DATE: MAY 2023  
SCALE: AS NOTED

IF THIS BAR DOES NOT MEASURE 1" THEN DRAWING IS NOT TO FULL SCALE

**C-1.00**