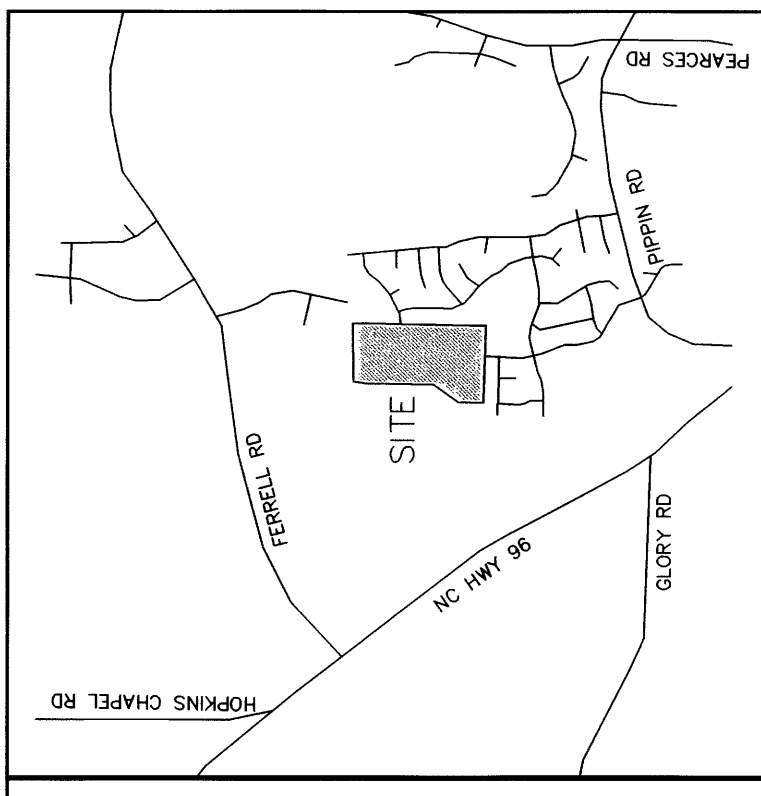
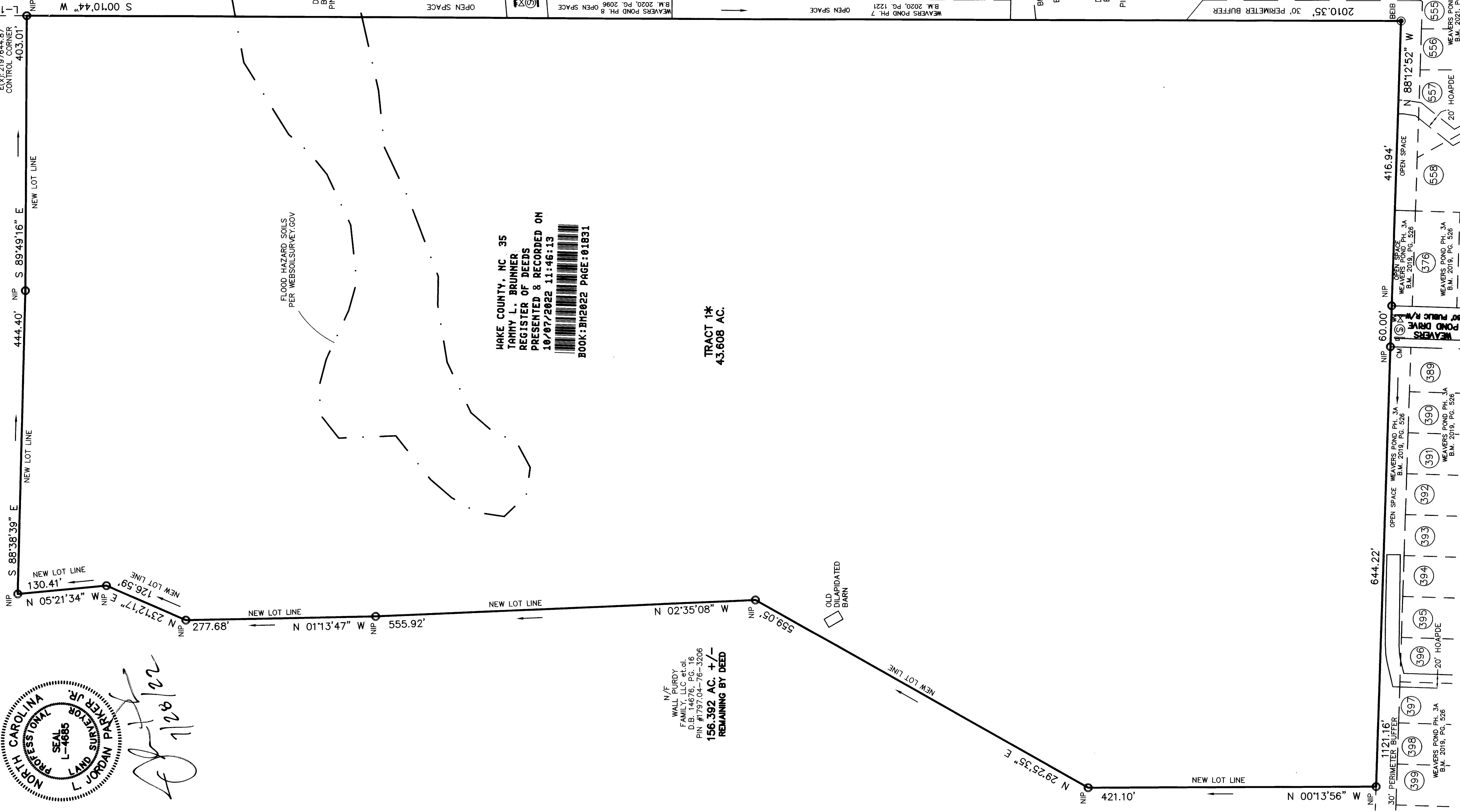


Handwritten signature and date: 5/27/22



VICINITY MAP

- LEGEND:**
- EIP - EXISTING IRON PIPE
 - EIB - EXISTING IRON BAR
 - BEIB - BENT IRON BAR
 - CM - CONCRETE MONUMENT
 - EPK - EXISTING PK NAIL
 - SPK - SET PK NAIL
 - NIP - NEW IRON PIPE SET
 - C/W - RIGHT OF WAY
 - ASB - ASBESTOS BOX
 - ETV - ELECTRIC TOWER
 - TEL - TELEPHONE PEDESTAL
 - PP - POWER POLE
 - OHL - OVERHEAD LINE
 - LP - LIGHT POLE
 - WM - WATER METER
 - WV - WATER VALVE
 - CC - CONCRETE
 - CB - CATCH BASIN
 - Ⓢ - MANHOLE
 - FH - FIRE HYDRANT
 - HOA - HOME OWNERS ASSOCIATION
 - DE - DRAINAGE EASEMENT
 - CV - COMMUNICATION VAULT

N/F WEAVERS POND DEVELOPMENT LLC
D.B. 14947, PG. 1191
B.M. 2020, PG. 2096
PIN #1797.04-71-9253

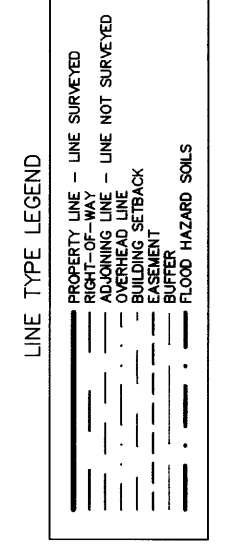
WEAVERS POND PH. 8
B.M. 2020, PG. 2096

WAKE COUNTY, NC 35
TAMMY L. BRUNNER
REGISTER OF DEEDS
PRESENTED & RECORDED ON
10/07/2022 11:46:13
BOOK: BM2022 PAGE: 01831

N/F WALL PURDY FAMILY, LLC et.al.
D.B. 14676, PG. 16
PIN #1797.04-76-3206
156.392 AC. +/-
REMAINING BY DEED

TRACT 1*
43.608 AC.

LINE	BEARING	DISTANCE
L-1	S 00°10'44" W	87.35'



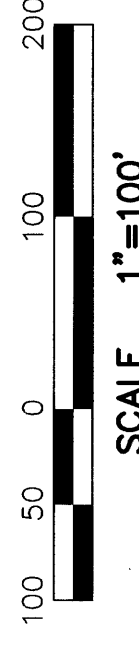
CMIP
PROFESSIONAL LAND SURVEYORS, C-1525
333 S. WHITE STREET
P.O. BOX 1253
WAKE FOREST N.C., 27588
(919) 556-3148

- NOTES:**
- 1) AREA COMPUTED BY COORDINATE METHOD.
 - 2) THERE IS NO NCGS MONUMENT WITHIN 2000' OF THIS PROPERTY.
 - 3) ALL SIGNATURES, SEALS, CERTIFICATIONS & NOTES ARE ON SHEET 1 OF 2.

N/F WEAVERS POND DEVELOPMENT LLC
D.B. 14947, PG. 1191
B.M. 2018, PG. 1997
B.M. 2021, PG. 354
PIN #1796.02-89-0217

EXEMPT SUBDIVISION FOR
WEAVERS POND DEVELOPMENT, LLC

OWNERS: WALL PURDY FAMILY LLC,
PHILIP RANDOLPH ISLEY, ELIZABETH
ISLEY RILEY, JESSILINE REALTY LLC,
& BLACK FAMILY LLC
REF: D.B. 14676, PG. 16
LITTLE RIVER TOWNSHIP
WAKE COUNTY, NORTH CAROLINA



SCALE 1"=100'
MAY 27, 2022
ZONED R-40W
PIN #1797.04-61-3206
SHEET 2 OF 2
PLC-3856-2022

(WEAVERS POND SUBD.DWG-TM)